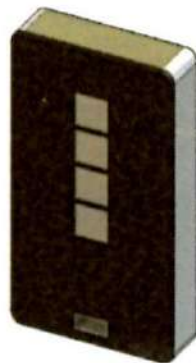




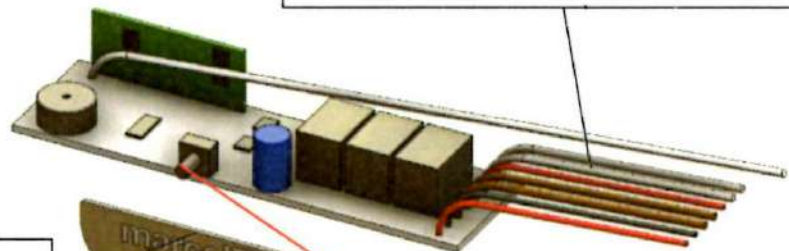
WARNING!

This procedure must be carried out by specialised personnel to prevent invalidating the warranty.

Contents of the replacement kit:



Template for drilling



Programming button

2 **red** cables (positive + common)
1 **black** cable (negative)
2 **brown** cables (controls)
2 **white** cables (auxiliary control)



PLEASE NOTE:

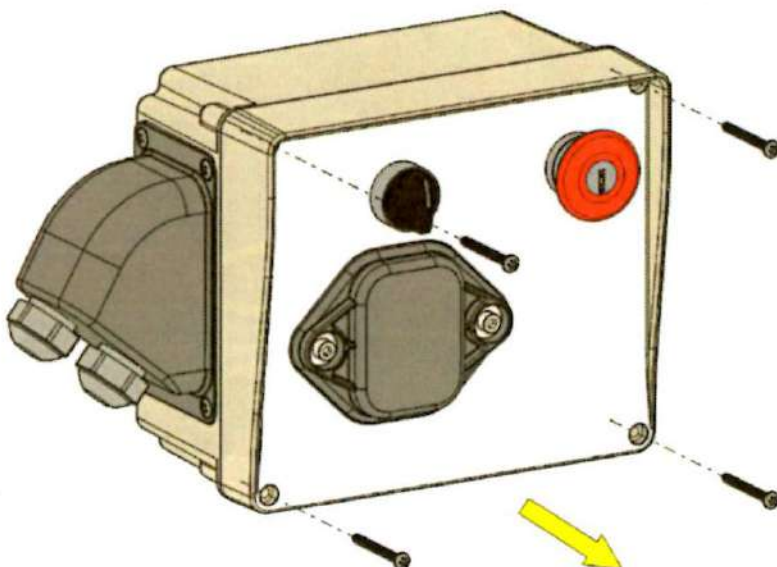
This procedure applies to all Motor Control Unit models.

Initial conditions: Motor Control Unit with old radio board.



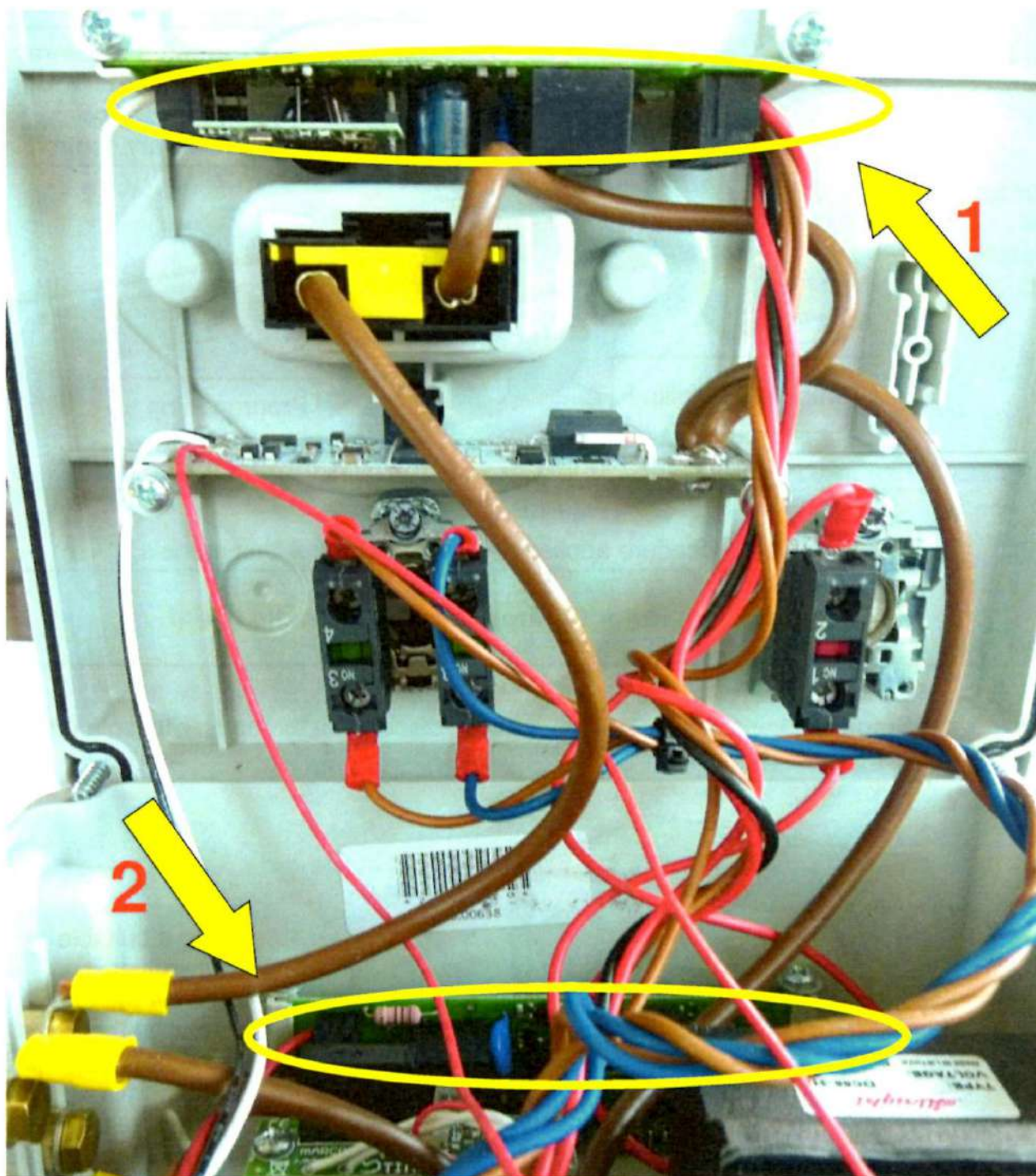
WARNING!

Before opening the Motor Control Unit, disconnect the battery to isolate the unit.



1. Using a suitable screwdriver, unscrew the four screws at the sides of the front cover of the Motor Control Unit and remove the cover.

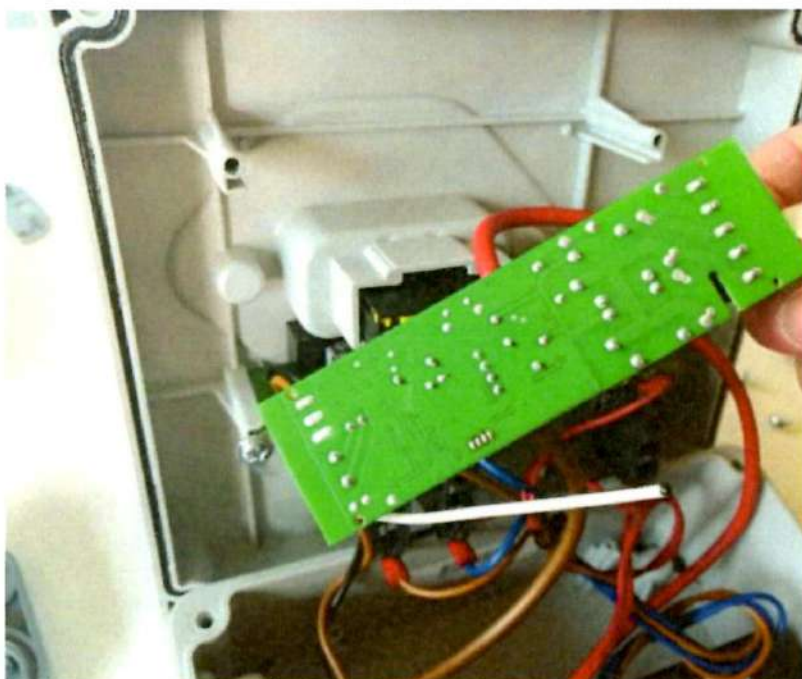
2. Locate radio board **1** and, if present, radio board **2** (auxiliary vibrator control). The new radio board replaces both boards.



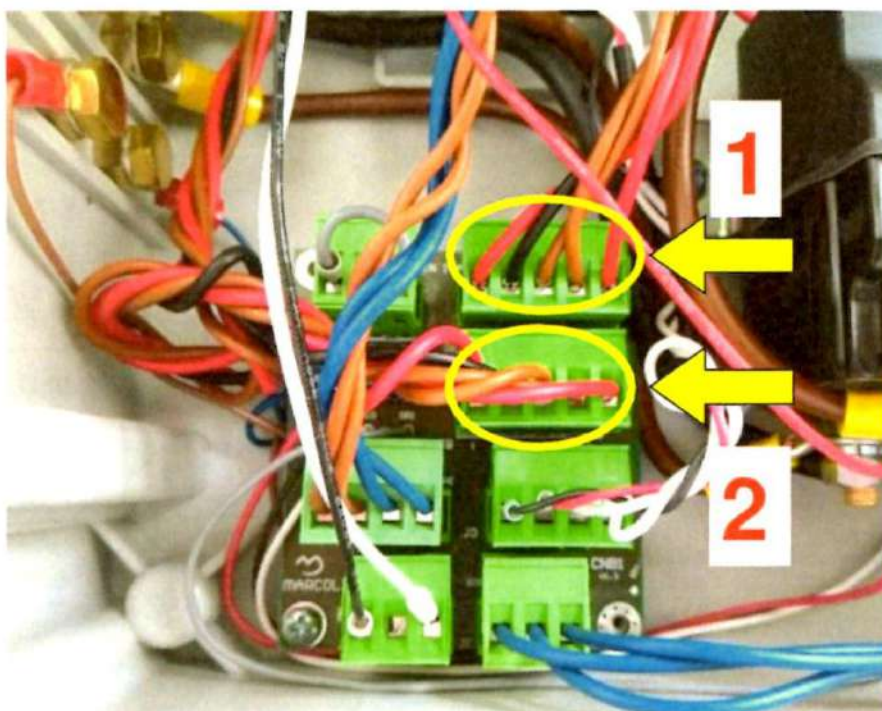


Replacing the radio board MOTOR CONTROL UNIT

3. Unscrew the two retaining screws at the sides of the slot and pull out the old card from its slot.

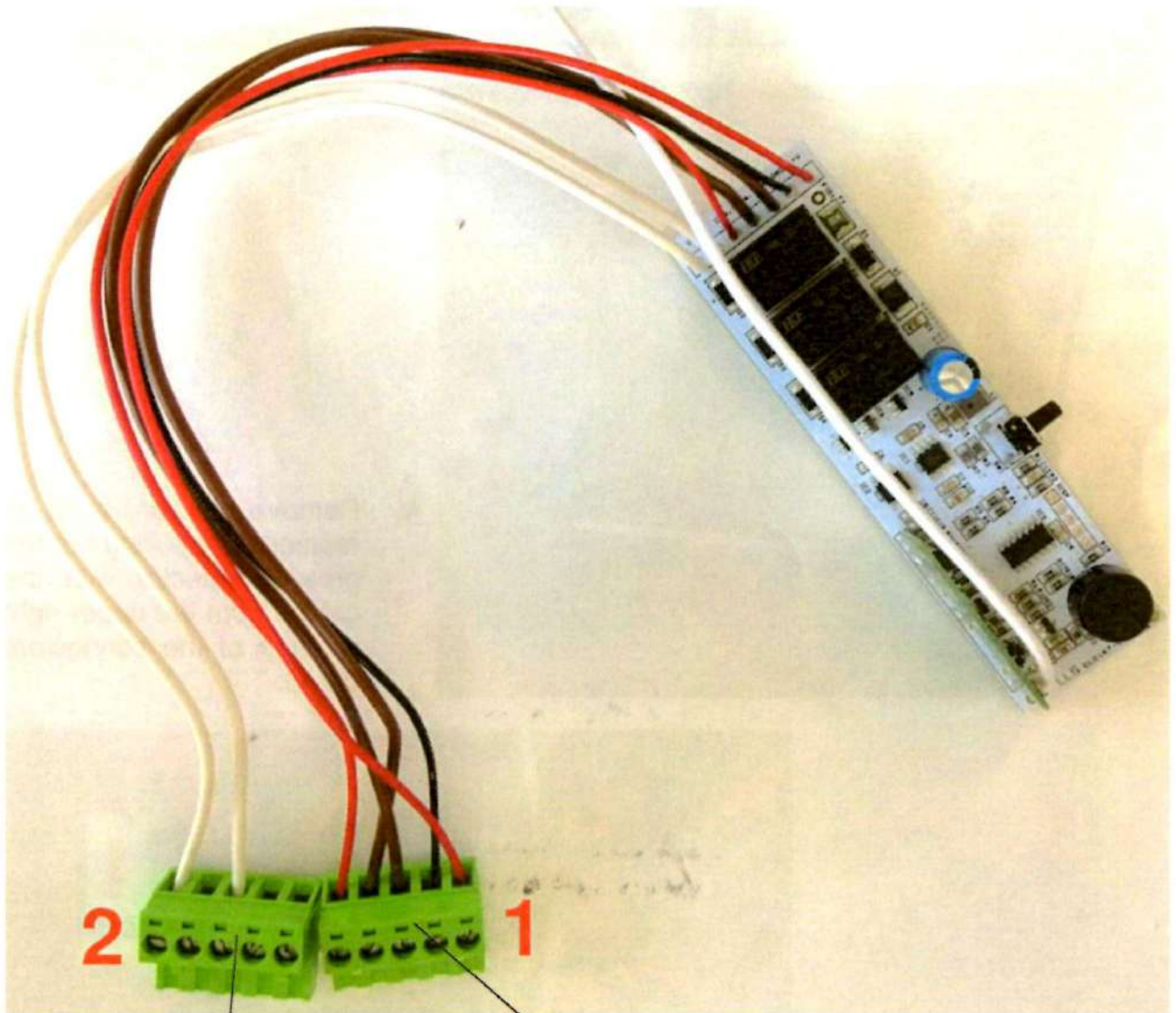


4. Remove the card(s) to be replaced, by pulling out the green connector with the cables from the upper right position of the connectors board:





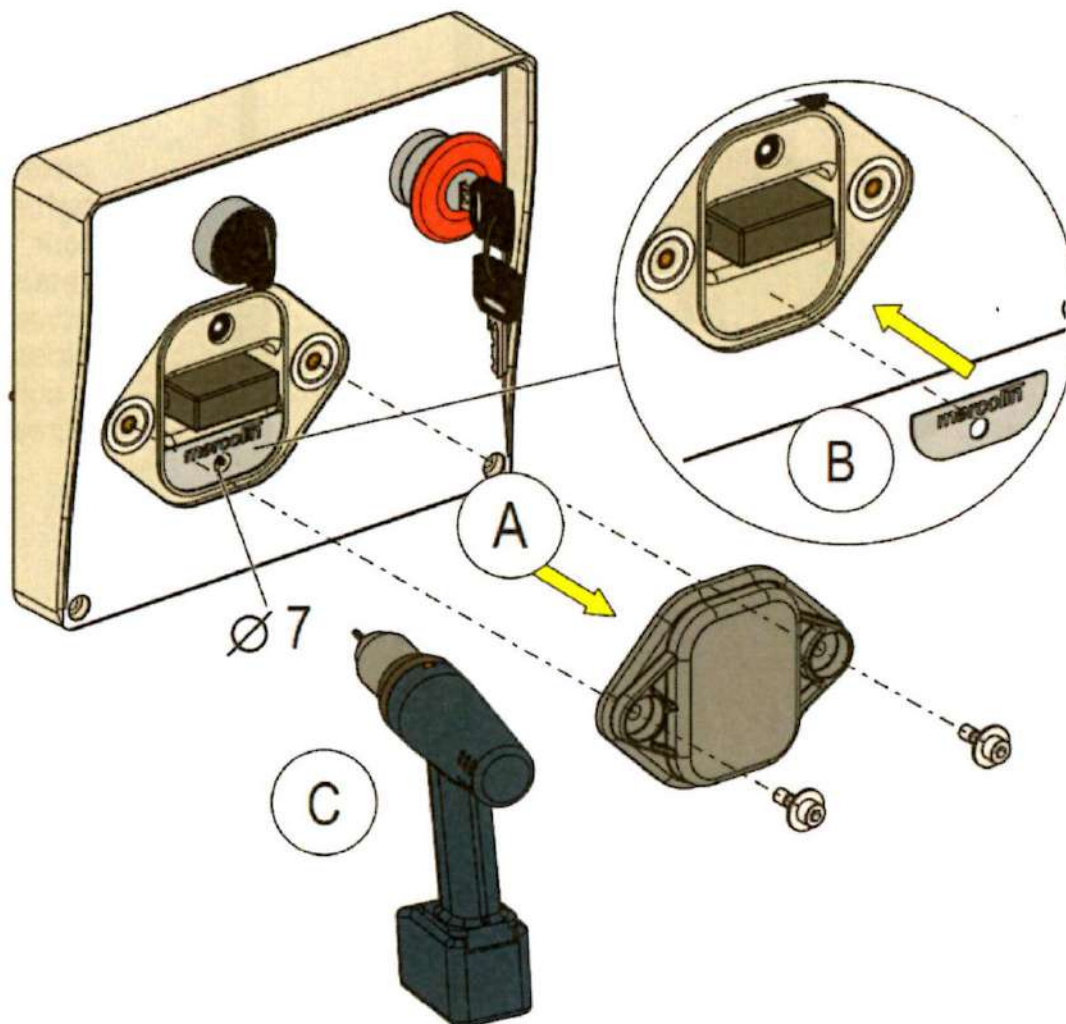
5. Disconnect the connector(s) and rewire it (or them) as shown in the following image (if you do not need to connect the auxiliary command, *cut off or tie the 2 white wires, insulating their ends*)



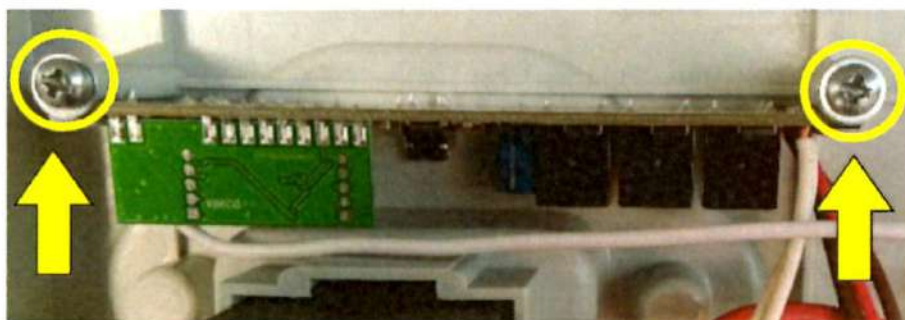
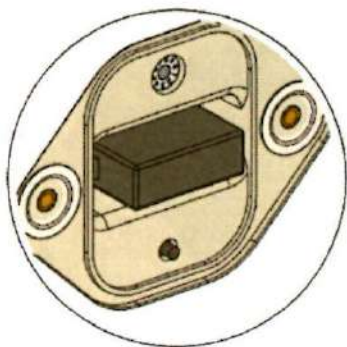
from left to right:
2. white (auxiliary control)
4. white (auxiliary control)

from right to left:
6. red (positive)
7. black (negative)
8. brown (motor control)
9. brown (motor control)
10. red (common)

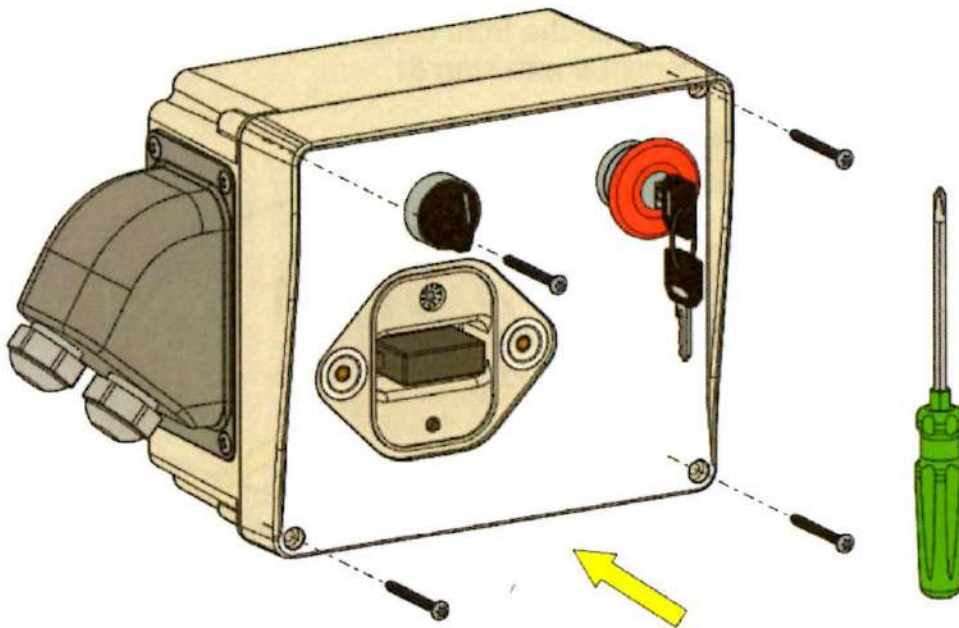
6. Remove the fuse cover and make a hole on the front cover using the template as a guide (if the hole is already present continue with step 8)



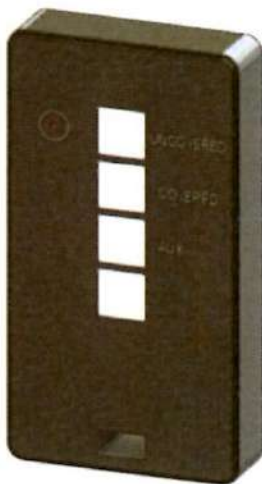
7. Remove the drilling template from the front cover
8. Slide the new board into its slot on the front cover of the Motor Control Unit, ensuring that the programming button protrudes from its opening, then secure the board by tightening the two retaining screws at the sides of the slot



This completes the replacement procedure.



9. Close the Motor Control Unit by replacing its front cover and tightening its four retaining screws at its sides, using a suitable screwdriver.



10. Power on the Motor Control Unit and proceed with the programming of the remote control.

11. Press once the black button on the front cover to enter programming mode: the radio board will emit an intermittent beep
12. Press any button on the "TX MARCOLIN" remote control: the radio board will emit a continuous beep
13. Wait a few seconds and then verify the correct operation of the remote control by testing the operation of the cover motor in the two directions (UNCOVERED and COVERED).

